



■ Bistonas



■ Building Location
— Bank of Site

Bistonas is a town located in the south-west part of Lithuania. It is famous for its hydrological resort and spa. The town is 30 km from Kaunas. It attracts large amount of people to come for tourist and relax.

The Nemunas River is closed to the town to give Bistonas a wonderful natural view of surrounding lakes are also essential of a nice natural part of the town.

My project is to design a building complex in the town. The main function of the building is a 300 offices. But it also contains of accommodation part.

For my project, the designed building will give a functional part of the town and attract more investment in the town. It will be a efficient way to promote the economic development.



Road to Eye View

Hotel

Community

Culture Attraction



Elevation #12 1:200

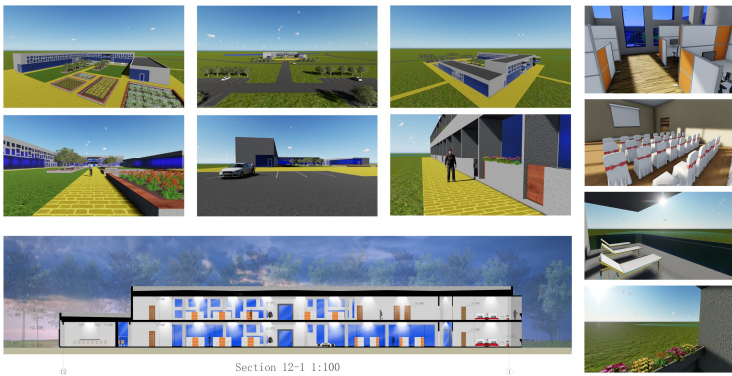
Elevation #1 1:200

Elevation #12-1 1:200

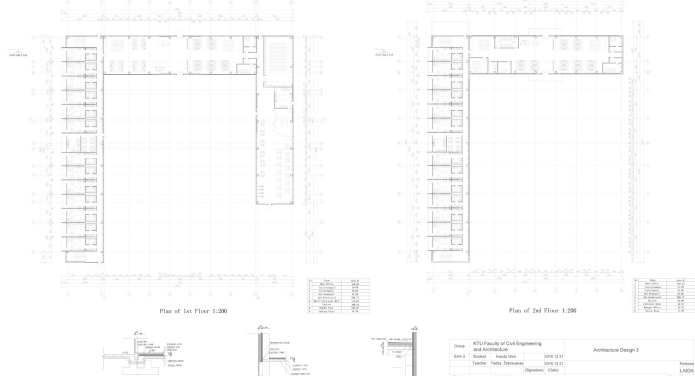
Elevation #14 1:200

Architecture Direction:
Reinforced Concrete Frame Structure

Main Facade Materials:
■ Green Reinforced Concrete
■ Blue Frame Glass Curtain Wall



Section 12-1 1:100



Plan of 1st Floor 1:200

Plan of 2nd Floor 1:200

| | | |
|---------|--|-----------------------|
| Class | WU Faculty of Civil Engineering and Architecture | Architecture Design 3 |
| DAW | DAW | |
| Name | Yan Sheng | |
| Project | Project | |
| Phase | Concept | |
| STAGE | Urbanism | |



Site Plan 1:200

- Grass
- Water
- Tree
- Roof
- Footpath
- Local
- Frame
- Footpath
- of Site
- Footpath
- Stilling
- Flow